



## Rotating Joints

## RJS14001 - WR15 (WR112) I type Rotating Joint >

Sylatech is proud to present this WG15 (WR112) rotating joint for marine applications. Designed for long life with dust seals and internal pressure seals, this design operates at a wide temperature band and pressure band. The design also boasts very good rotating stability at 1.05:1 max (1.02:1 typical) and also very good peak power handling.

**T: 01751 432 355 E: [info@sylatech.com](mailto:info@sylatech.com)**

### SPECIFICATION

Frequency	5.85 GHz to 6.725 GHz
Return Loss	17.7 dB Min (VSWR 1:3:1 Max)
Insertion Loss	0.1 dB Max
WOW	0.05:1 Max
Average Power	6.6 kW
Material	Aluminium
Leakage Rate	10 cm <sup>3</sup> min <sup>-1</sup> max
Operating Pressure	30 psig (2 bar)
Finish	Chromate Conversion per MIL-C-5541 Class 1A



## RJS15003 - WR15 (WR112) I type Rotating Joint >

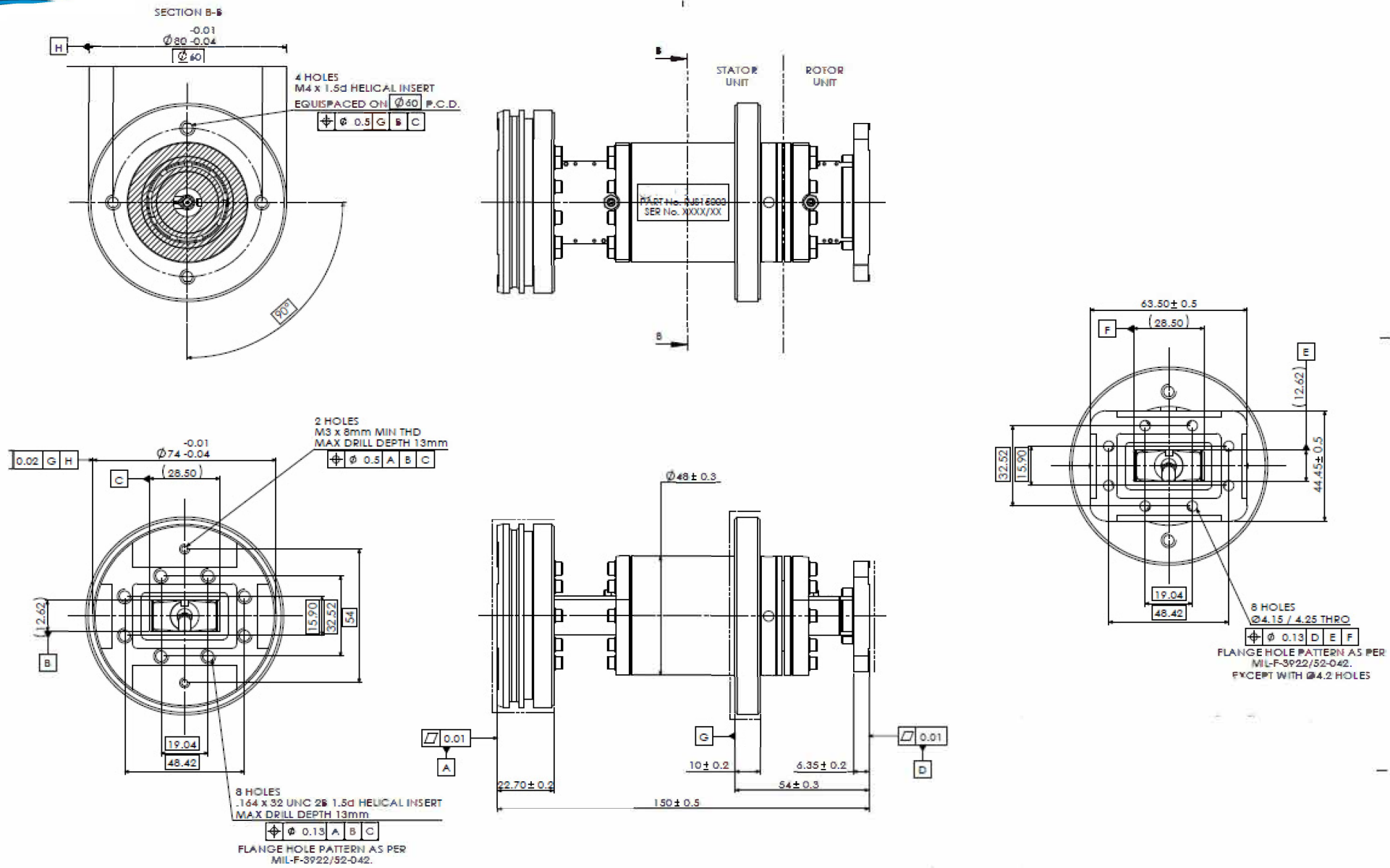
Sylatech is proud to present this WG15 (WR112) rotating joint for marine applications. Designed for long life with dust seals and internal pressure seals, this design operates at a wide temperature band and pressure band. The design also boasts very good rotating stability at 1.05:1 max (1.02:1 typical) and also very good peak power handling.

**T: 01751 432 355 E: [info@sylatech.com](mailto:info@sylatech.com)**

### SPECIFICATION

Frequency	9.9 GHz to 10.5 GHz
VSWR	1.2 : 1 Max
WOW	1.05 : 1 Max
Insertion Loss	0.15 dB Max
Peak Power	200kW Max (at guage pressure 120kPa)
Average Power	3kW Max
Pressure	30 PSI (200 kPa)
Leak Rate	18 PSI (120kPa) 4cm <sup>3</sup> Max
Finish	Chromate Conversion MIL C 5541 Class 1A
Paint	Matt Black DEF STAN 80-161





# Engineering your future



Kirkdale Road,  
Kirkbymoorside, YO62 6PX  
E: [info@sylatech.com](mailto:info@sylatech.com)  
T: +44 (0) 1751 432 355  
[www.sylatech.com](http://www.sylatech.com)